

**S E L E C T E D  
W O R K S**

**W Y A T T  
C O C H R A N**

# W Y A T T   C O C H R A N

DENVER, CO & KANSAS CITY, MO

I am a designer with a passion for creating spaces that elevate human experience. My work is rooted in curiosity, empathy, and a deep appreciation for materiality, light, and form. I am especially drawn to interiors, community and hospitality environments where design can foster connection, comfort, and meaning. With experience in schematic design, concept development, and project coordination, I approach each challenge with a balance of creativity and critical thinking. I value collaboration, thoughtful details, and the opportunity to design spaces that not only function well but feel good to inhabit.



## C O N T A C T

W-ALEXANDER.COM  
WYATT.A.COCHRAN@GMAIL.COM  
(779) 208-5063  
LINKEDIN.COM/IN/WYATTACOCHRAN

# P R O J E C T S

## 1 .   C A B I N

VISUALIZATION II

## 2 .   D U P L E X

BONSAI DESIGN BUILD

## 3 .   C A F E

STUDIO III

## 4 .   W O R K / L I V E

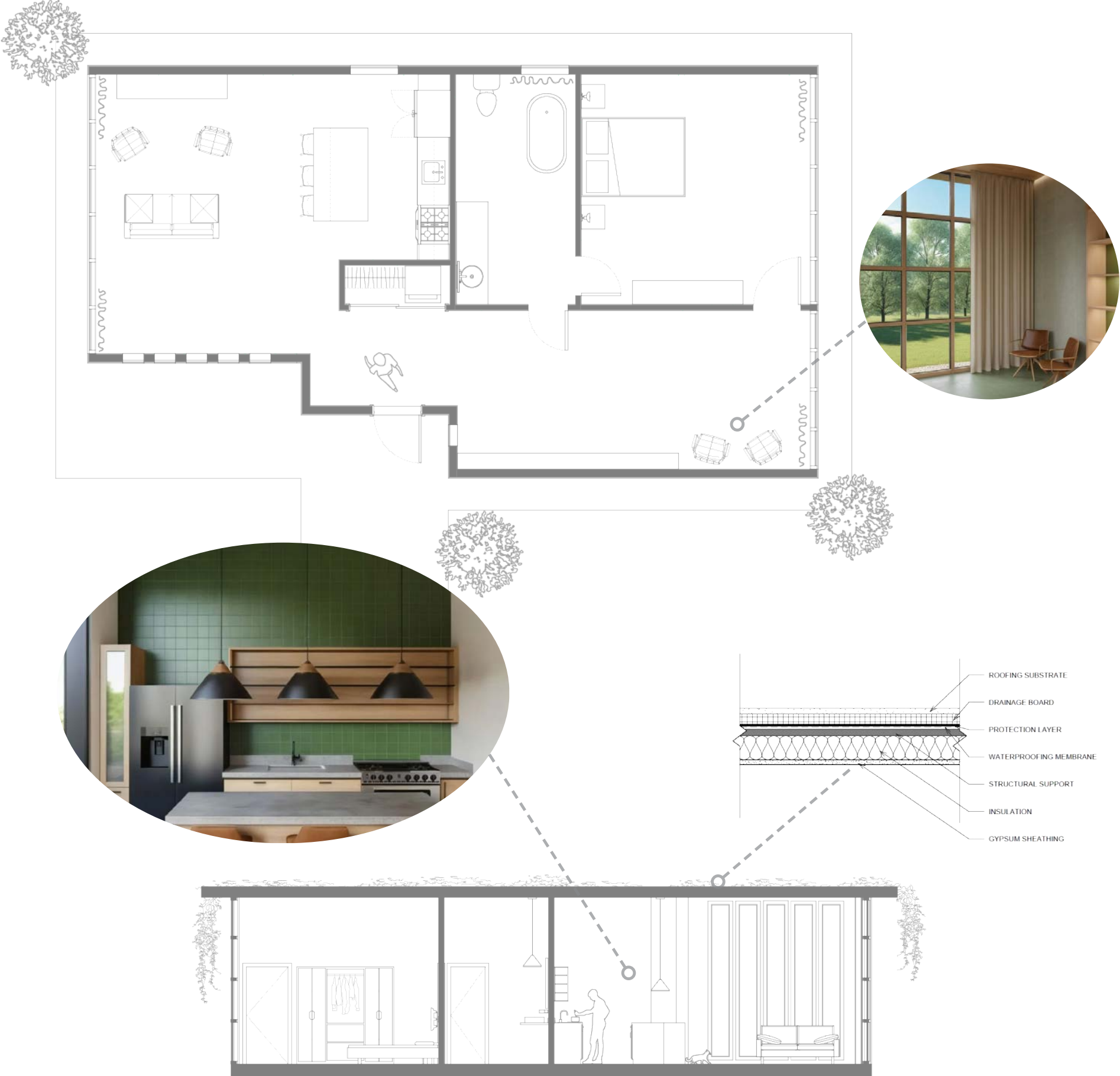
STUDIO IV

## 5 .   P R E C E D E N T

STUDIO III

## 6 .   A M Y ’ S   B E D

PERSONAL PROJECT



## NO. 1 CABIN

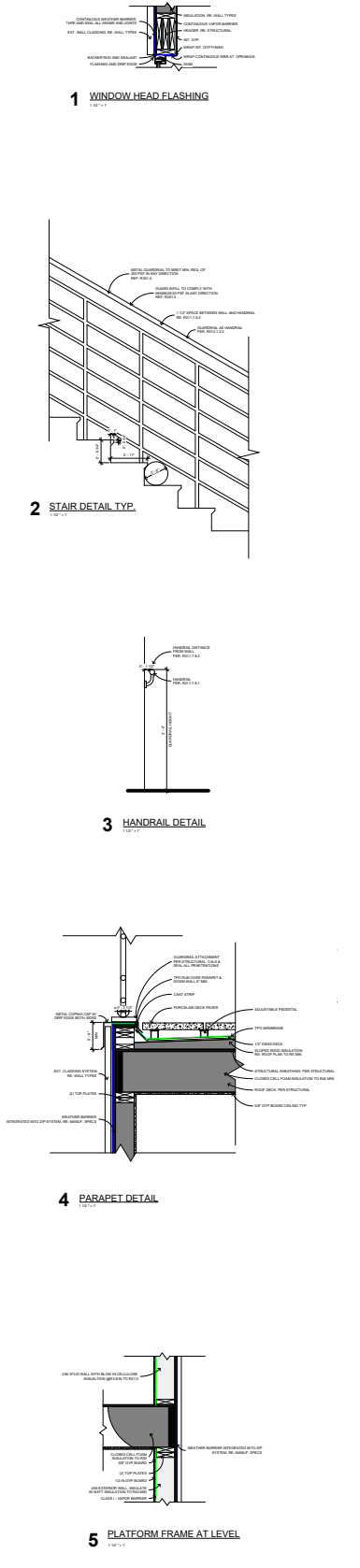
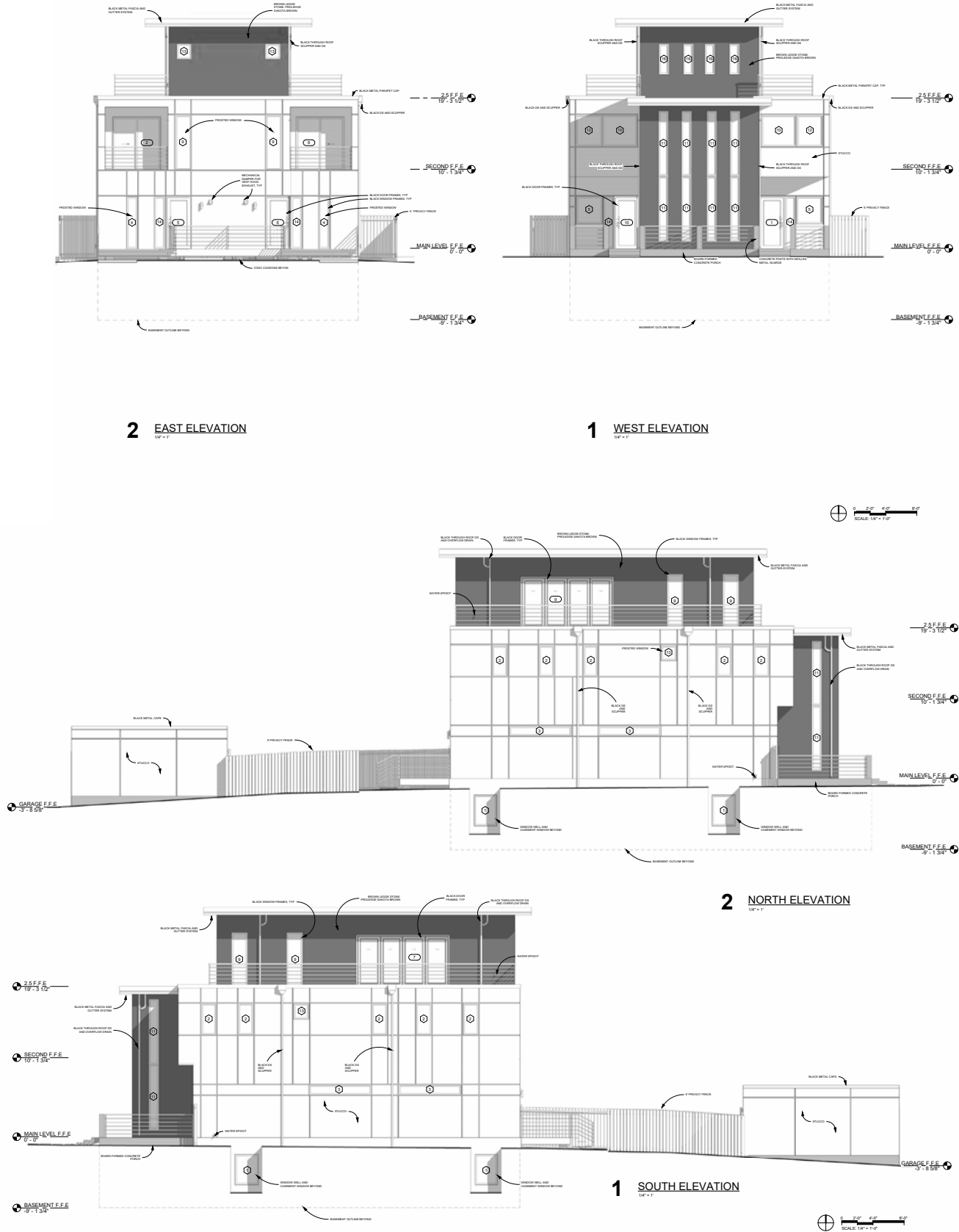
Designed as part of my Visualization II class, with the goal of creating a small, one-bedroom cabin inspired by Japanese ceramic tiling and traditional woodworking techniques. The cabin is thoughtfully designed for an individual who values craftsmanship, seeks a strong connection with the outdoors, and desires a space that feels both intimate and spacious. The cabin balances simplicity and elegance, offering a retreat where nature and gathering coexist harmoniously.



NO. 2

# DUPLEX

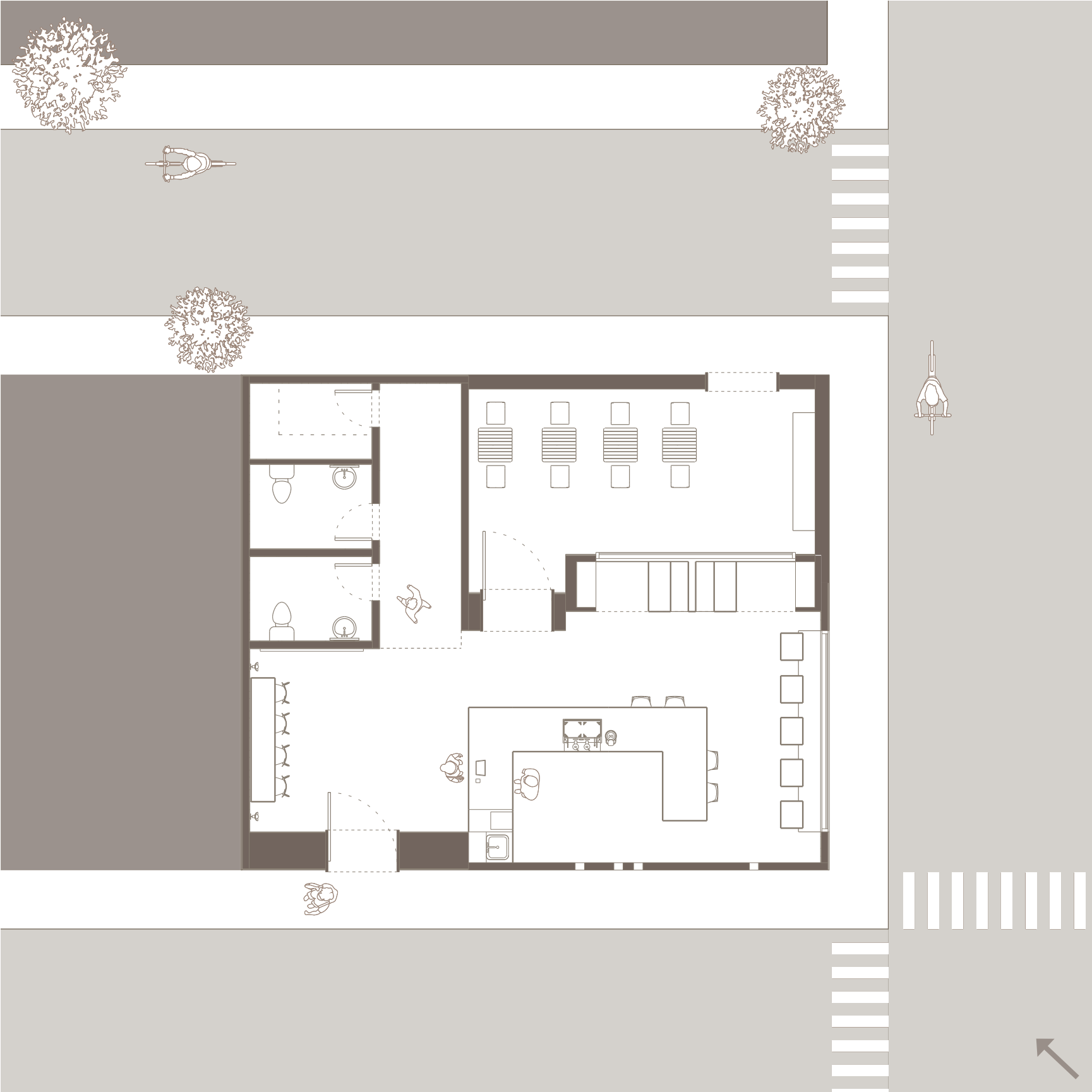
This duplex project, completed with Bonsai Design Build, involved the development of a modern two-unit residential structure focused on efficient layout and sustainable building practices. While I did not contribute to the design, I assisted in the documentation phase by creating a comprehensive set of drawings in Revit. My role supported the translation of design intent into detailed construction documents, ensuring accuracy, coordination, and clarity across all sheets. This experience strengthened my technical drafting skills and deepened my understanding of construction documentation within a collaborative design-build environment.

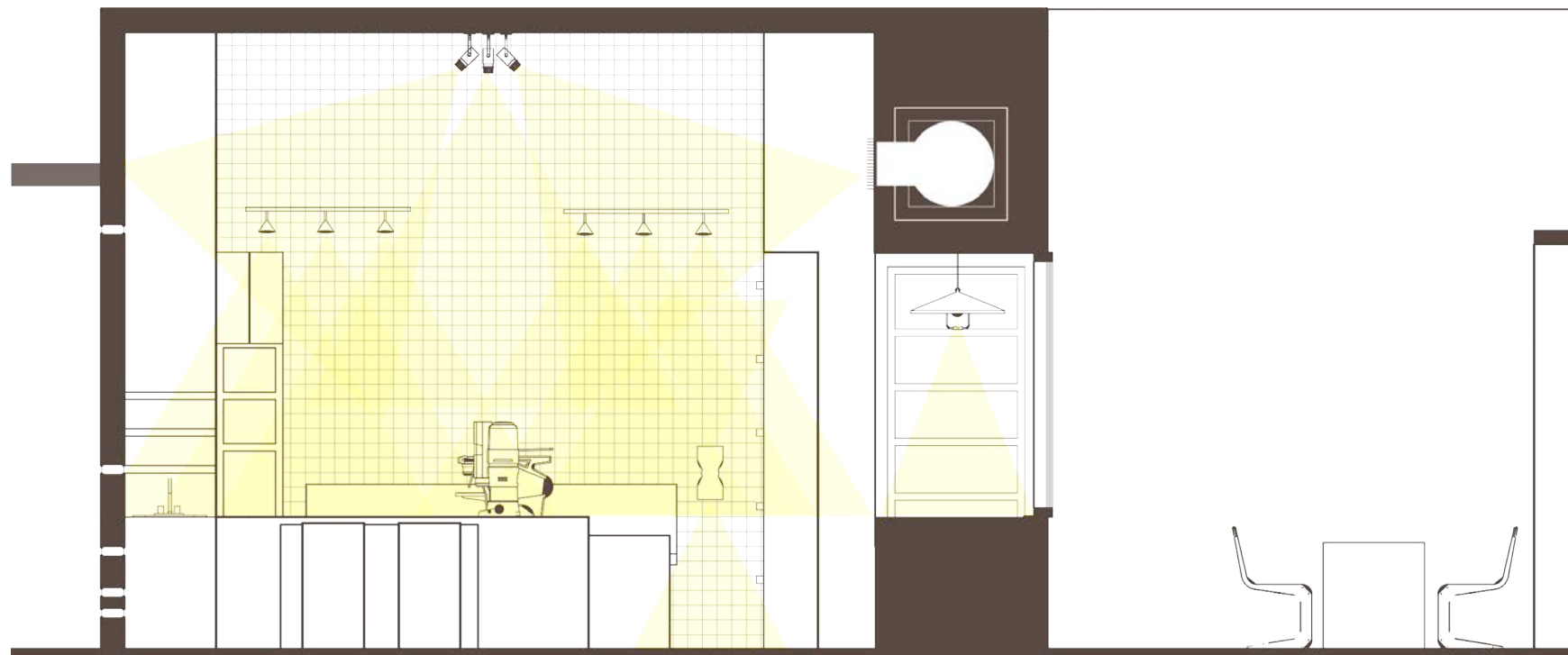


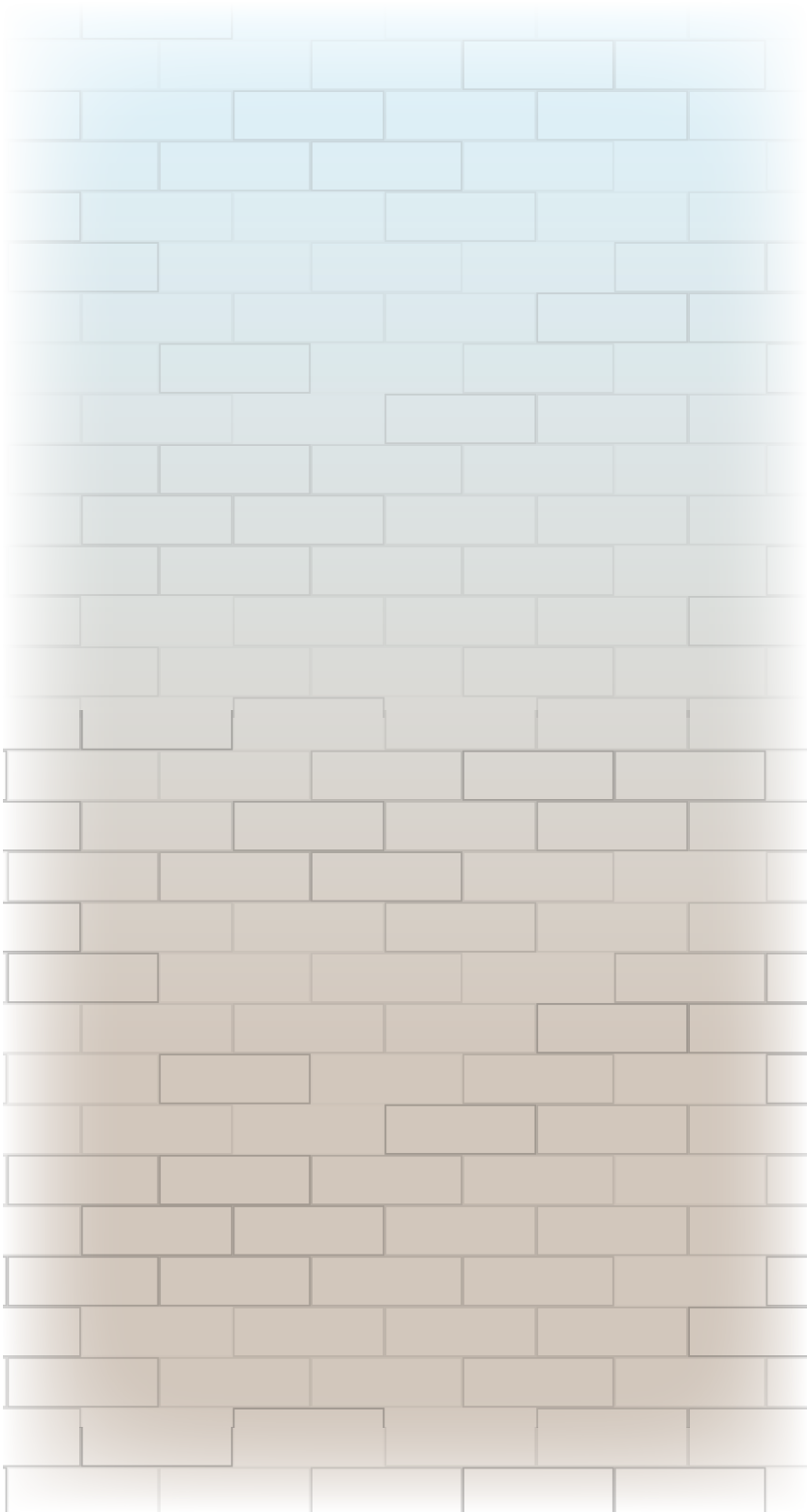
NO. 3

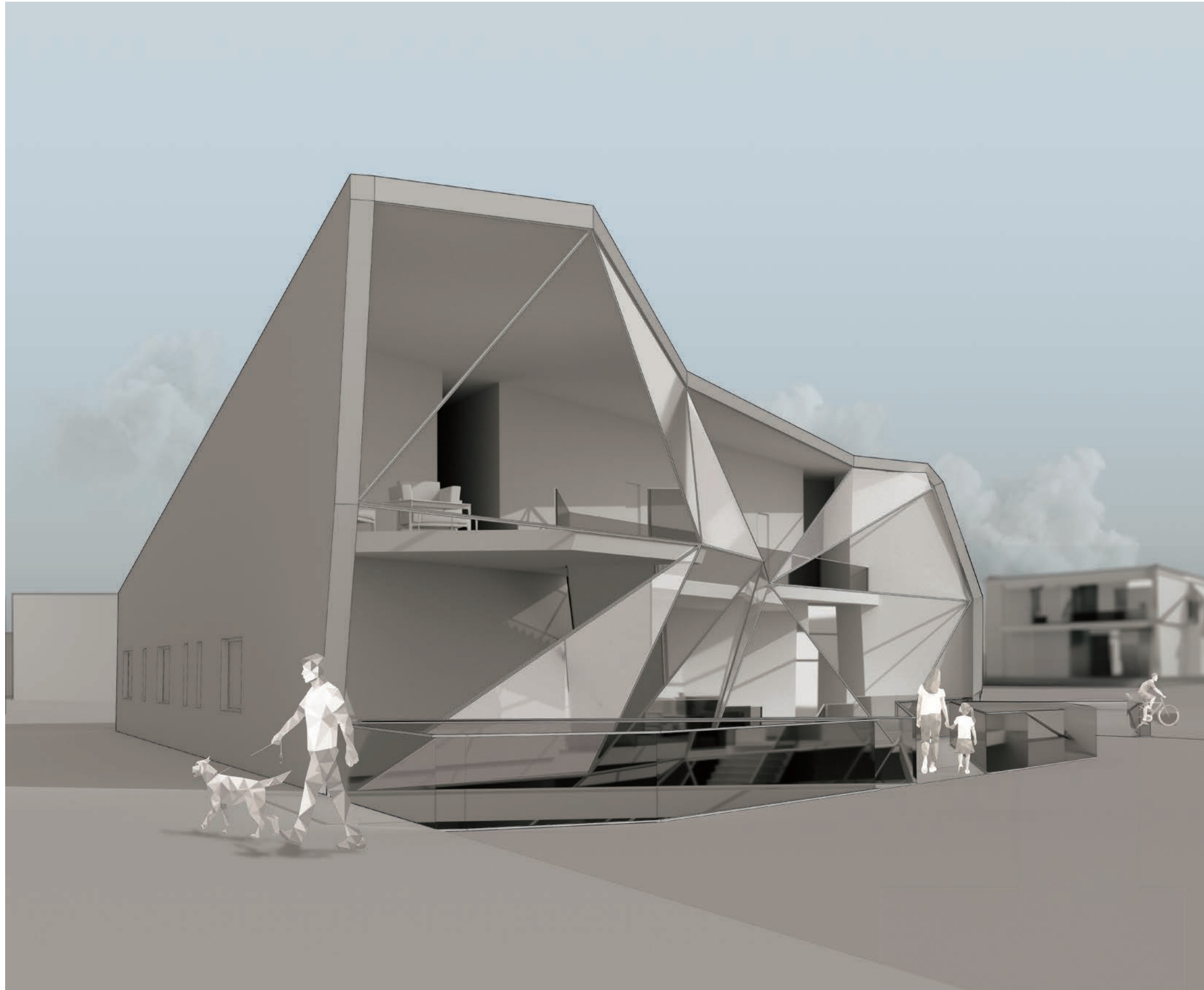
CAFE

This project is a café designed for a compact urban lot in Seoul, nestled between an alley and a street and connected to an existing building. The design draws inspiration from the coffee brewing process, which is symbolized in the façade's striking glass brick feature. The bricks transition from a deep blue at the top to a warm amber at the bottom, evoking the transformation of coffee as it is brewed. The interior exudes warmth and character, with materials such as wood, concrete, tile, and bronzed glass windows creating a welcoming environment. The café also features a patio for outdoor seating, encouraging interaction with the surrounding urban fabric. The project emphasizes the thoughtful integration of form, materiality, and experience in a bustling city context. It reflects my dedication to crafting spaces that balance functionality, aesthetic appeal, and the essence of human connection.





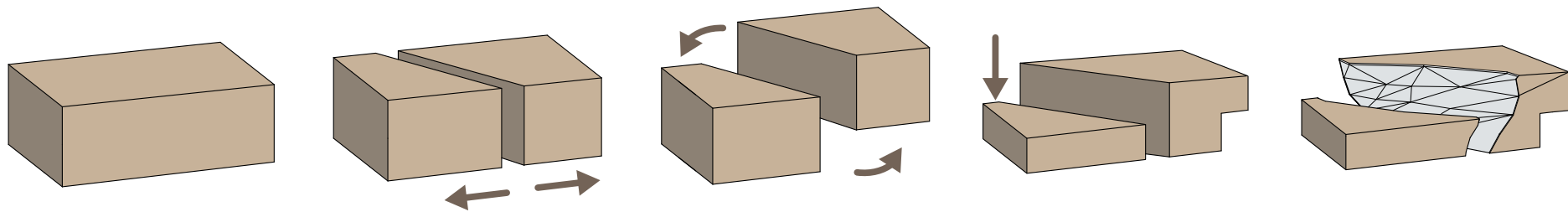
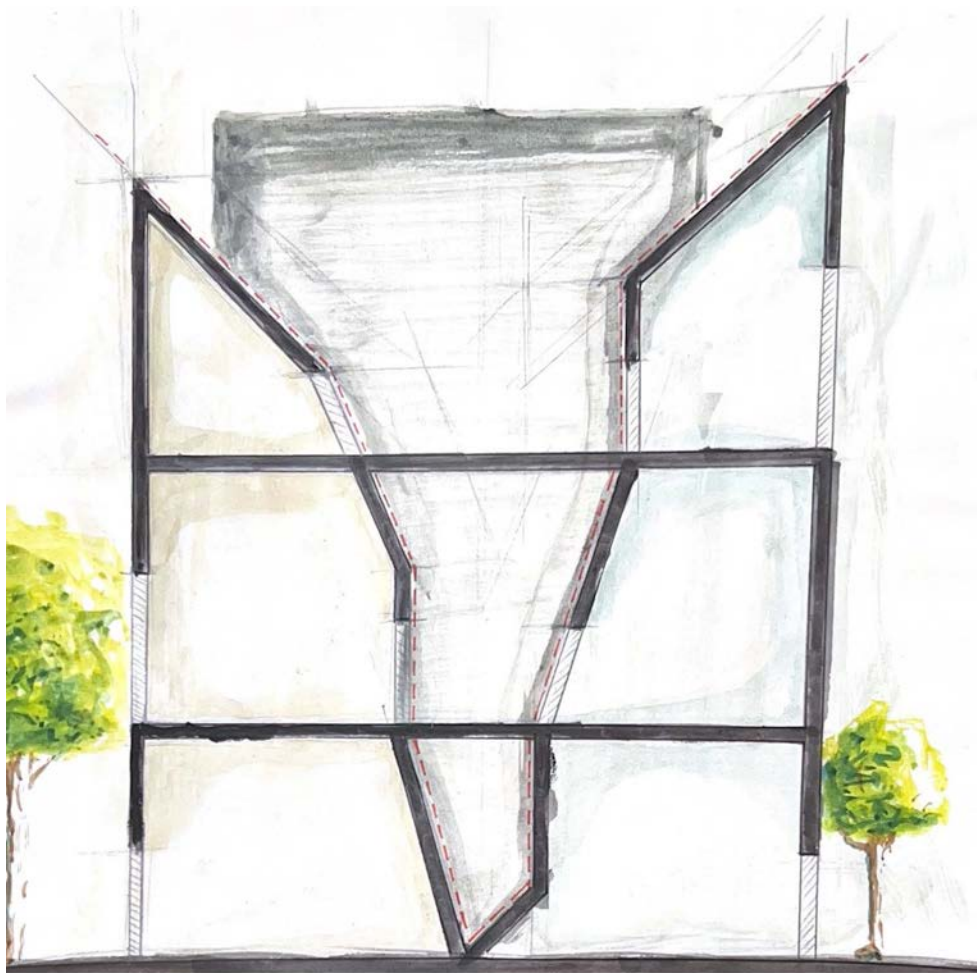
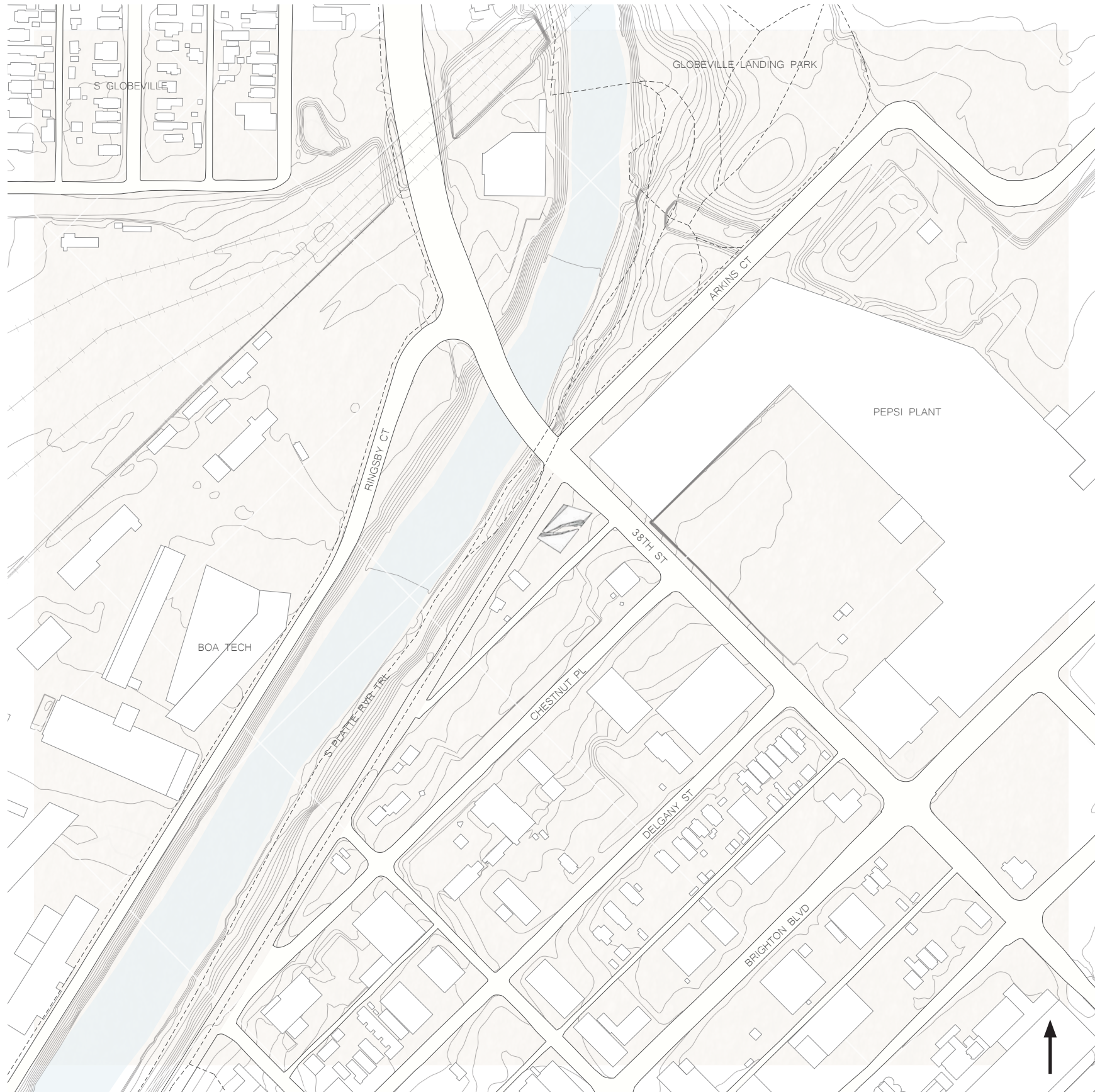




NO. 4

## WORK / LIVE

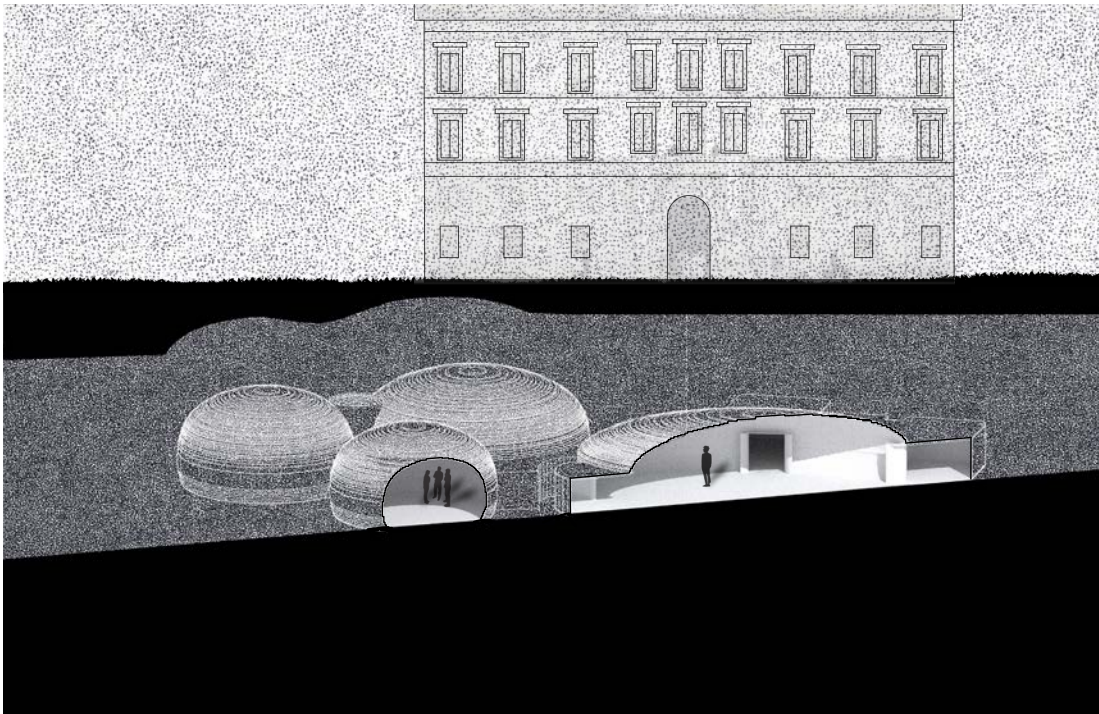
This residency program aims to create a dynamic work-live environment that explores human experiences through sensory perception. Rooted in interconnected and fractured design principles, the project integrates sensory analysis and sensory deprivation, featuring a design that mimics slot canyons. Our concept emerged from both qualitative and quantitative site analysis, recognizing that shifting sensory experiences can profoundly affect overall human experience. Societal and cultural influences are central, shaping perceptions of stimuli and forming norms and identities. Precedents like a residence and day center informed the design process, resulting in a dynamic, irregular negative space that symbolizes the division between two unique sides. The project focuses on the interplay between sensory inputs and human perception, adopting an immersive environment where inhabitants actively engage with various stimuli while exploring the impacts of sensory deprivation on perception.





NO. 5  
PRECEDENT

Tasked with analyzing two buildings of distinct programs—one focused on community and the other on archival spaces. Using only photographs and plan views, I developed 3D models in Rhino to generate section isometrics, allowing for deeper insight into their spatial organization and design. The selected works were Maggie's Oldham by dRMM Architects in the UK, a community-focused healthcare center, and the Fondazione Luigi Rovati addition and renovation in Milan by Mario Cucinella Architects, which houses an archival collection. These studies helped me understand the structural and spatial qualities of each project in relation to their functions.



FONDAZIONE LUIGI ROVATI



MAGGIE'S OLDHAM

NO. 6  
AMY'S BED

A small cat bed infused with the playful spirit of Frank Gehry's Swiggle Chair. Drawing inspiration from the iconic curves and fluid lines, I crafted a unique and whimsical resting place for feline companions, blending innovative design with comfort and style.



PERSONAL PROJECT. AUTOCAD, CARDBOARD, MDF, COTTON

**S E L E C T E D  
W O R K S**

**W Y A T T  
C O C H R A N**

PORTFOLIO FROM ACADEMIC AND PROFESSIONAL DISCIPLINES

ARCHITECTURE AND INTERIOR DESIGN